



“Bridging Opportunity”

Wallaceburg & District Chamber of Commerce

2012 Edition—Issue 4



Message from President, Carmen McGregor



At the Wallaceburg & District Chamber of Commerce Annual General Meeting held on Wednesday, November 7, 2012, the 2013 Board of Directors was nominated and elected. At the meeting, I was pleased to accept the nomination of President for the upcoming year. This allows me the pleasure of introducing your Board of Directors; Mike Hatfield (Vice President), Matt Montague (Treasurer), Gloria Tulp, Brad Borland, Greg Hetherington, Kelly Hetherington, Francis Dobbelaar, Bob Taylor, Barb Noorenberghe, Barb McCaughrin, and no stranger to this Board, but new to the 2013 Board of Directors, Karen Debergh (Secretary). This is a very dedicated team who along with our Office Manager, Tina Fraleigh, we will work hard to ensure the Chamber delivers services and programs to add value to your membership and to continue to advocate for Wallaceburg and surrounding areas of North Kent.

Special thanks also go to the Board members who will not be returning to the Chamber this year, Gerry Flynn, Greg Walton, and John Salisbury. Each of these people spent many hours on

behalf of the Chamber membership and their dedication served our organization well.

The main focus of the Directors of the Chamber this year will be to align and improve the membership services with the current and future needs of our community and local workforce. This will entail building stronger relationships with the **surrounding BIA's and municipal** partners while increasing the opportunities for promotion through trade and commerce and by representing your interests at all levels of government.

Some of our new initiatives will include your membership to the Ontario Chamber of Commerce, the opportunity to select the type of membership that better suits your organization through our tiered membership program and a new and improved website for your easy access with many links to your fellow members, organizations, and government offices. We are also very pleased to be able to offer our members new and improved advertising methods either through our website or on our **“Bridging Opportunity” signs** which are located on the edges of Wallaceburg.

I would also like to ensure

you that we will continue to provide you with many merchant discounts and opportunities for various extended health plan options that are not always affordable for individuals and small business. There will be many opportunities for networking as our events are being revamped; as for example the **“Business Excellence Awards”**. This year our most prestigious event will take place at the Wallaceburg Museum and Jeannie Gordon Hall, there will be changes to the current award structure along with some new categories and awards provided and presented by the Wallaceburg and **Dresden BIA's**. We are hosting a networking breakfast in February with guest speaker Tony Clements. Our Golf Tournament will return to a regular best ball format and Business After Hours will continue.

Please take the time to check out our new Chamber website, to meet the 2013 Board of Directors and to view the many scheduled events, [“www.wallaceburgchamber.com”](http://www.wallaceburgchamber.com)

Inside this issue:

<i>2012/13 Board of Directors</i>	2
<i>Chamber Group Insurance Benefit Facts</i>	3
<i>Get to Know Your Executive</i>	4
<i>Call for Nominations!!!!</i>	5
<i>Get to Know Your Executive cont'd</i>	6
<i>2013 Tiered Membership</i>	7
<i>Welcome New Members</i>	8

Special points of interest:

- *Foundation of Chatham-Kent Health Alliance Special Events*
- *WSIB Ontario*
- *St. Clair College Capitol Theatre*



Wallaceburg & District Chamber of Commerce

"BRIDGING OPPORTUNITY" IS THE QUARTERLY PUBLICATION OF THE WALLACEBURG & DISTRICT CHAMBER OF COMMERCE

our mission

The Wallaceburg & District Chamber of Commerce shall be a cohesive force for business interests by:

- A) Representing Wallaceburg & District businesses to Governments, Community Interest Groups, Businesses and other Chambers of Commerce;
- B) Promoting Wallaceburg & District Businesses and Community;
- C) Providing a forum for business interaction, and
- D) Providing Membership services



Congratulations to the 2012/2013 board of Directors

President

Carmen McGregor

Vice president

Mike Hatfield

Secretary

Karen Debergh

Treasurer

Matthew Montague

Directors

Fran Dobbelaar

Greg Hetherington

Kelly Hetherington

Ron Laroche

Gloria Tulp

Brad Borland

Barb Noorenberghe

Barb McCaughrin

Bob Taylor

Kristine Ritchie RMT
Registered Massage Therapist

Duke Chiropractic

222 Nelson Street
Wallaceburg, ON
N8A 4G4

519-627-5261

kristineveenstra@hotmail.com

Take care of your body, it's where you live!

Paraffin Wax
Hot Stone Therapy
In-chair Massage
Aromatherapy

CORVETTE CHEVROLET BUICK GMC
RIVERVIEW 50
SINCE 1962 YEARS

854 Murray Street
Phone: (519) 627-6014

BENEFIT facts:

CHAMBERS OF COMMERCE GROUP INSURANCE PLAN®

MORE FOR LESS

Are you looking to enhance your group benefit package without increasing your costs? Have you considered elective products like Optional Life?

Though all group plans include some basic life insurance, the coverage may not fully address every employee's financial needs. Like your employees, each individual's financial needs are unique, and offering additional coverage to supplement the benefits you do provide is a great way to add flexibility at no additional cost to the firm.

The Chambers of Commerce Group Insurance Plan Optional Life Insurance lets an employee top up their basic coverage, and even cover their spouse and dependent children, too. Designed to bring employees low group process and a high

degree of individual flexibility, your employees can build the program they need at a price they can afford.

Chambers Plan Optional Life Insurance is also portable. That means the employee can keep the insurance even if he or she leaves your company. That's a great advantage to people who may not be healthy enough to apply for this kind of program under future circumstances.

Offered in units of \$10,000, premiums are paid by the employee and all you do is deduct the monthly premium through your payroll and send it to the insurer with your monthly premium remittance.

An attractive product for anyone wanting an affordable safety net, Chambers Plan Optional Life Insurance can give your

employees the protection they need, at no additional cost to you. So why not include it in your group benefit program?

Your local advisor can show you how this coverage can fit into your benefit plan.

Benefit Facts presents information to help you manage your employee benefits. Brought to you by your Chambers of Commerce Group Insurance Plan® advisor, representing Canada's premier group plan for small and medium sized businesses.

Mares Insurance Services Inc.
133 King Street West, Chatham, ON, N7M 1E4
Phone: (519) 354-3131 x2223
Fax: (519) 360-1673
Email: joe.mares@sunlife.com



Upcoming Chamber Events



February 1, 2013

Breakfast Meeting with Tony Clement


Details to follow soon



233 Nelson Street
Wallaceburg, ON
N8A 4G5

SEG Funds
RRSP'S * RESP'S
Insurance
Financial Planning
Small Business Bookkeeping

All your financial needs under one roof!



Dr. Jeffrey K. Fox, BHK, CK, DC

Doctor of Chiropractic
Certified Kinesiologist

753 James St.
Wallaceburg, ON
N8A 2P4

Tel. (519) 627-9995
Fax. (519) 627-9997

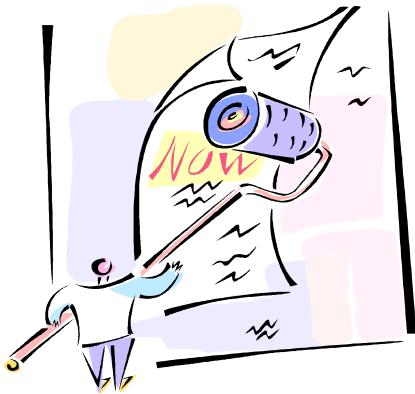
Get to know your Executive Committee . . .



President, Carmen McGregor

Carmen was born and raised in Wallaceburg. She has 4 children and 4 grandchildren. Carmen is married to Tom and they live on their family farm outside of Tupperville. Carmen works as the Office Manager at Hyde, Hyde & McGregor. She is a Trustee for the Lambton Kent District School Board and is a founding director of the Sydenham Toastmasters.

LET US HELP YOU...



PROMOTE YOUR BUSINESS

The *Bridging Opportunity* newsletter is an affordable way to promote your business to other Chamber members and visitors.

The newsletter is distributed to approximately 200 members by email as well as being showcased on the Chamber website.

The newsletter is also included in all our membership packages.

There are three advertising opportunities available to you, which are listed below.

Banner Ad—\$110.00 (for 4 issues)

Business Card Size Ad—\$80.00 (for 4 issues)

Newsletter Insert—\$45.00 (per issue)

If you are interested in advertising in the newsletter, please contact Tina Fraleigh at the Chamber office (519) 627-1443.



Fab Therrien

1317498 Ontario Ltd.
Mc Naughton Plaza
30 Mc Naughton Ave.
Wallaceburg, Ontario N8A 1R9
www.petvalu.com
www.performatrinultra.com

Tel./Fax: (519) 627-2419
Store Hours: Mon-Wed & Sat 9-7
Thu & Fri 9-9, Sun 10-5



Steve Outridge, C.A.
Partner

708 WELLINGTON STREET
PO. BOX 248
WALLACEBURG, ONTARIO
N8A 4L6

TELEPHONE: 519-627-1448
FAX: 519-627-0557
EMAIL: steveo@bkf.ca
WEBSITE: www.bkf.ca

**Bailey
Kearney
Ferguson**
CHARTERED
ACCOUNTANTS



Shop Local CK Loyalty Program

Shop Local CK and the Wallaceburg & District Chamber of Commerce have joined forces in order to introduce an exciting local loyalty program to business members.

The Shop Local CK loyalty program gives people the tools and incentives they need to locate and support the independent and locally-owned businesses that make Chatham-Kent great. With the purchase of **this unique loyalty card you'll unlock great discounts at more than 65 local retailers, restaurants, and service providers.** What's more, \$1 from your card purchase will be donated to United Way of Chatham-Kent to help fund important local programs.

Wallaceburg & District Chamber of Commerce members are invited to purchase a limited number of discounted Shop Local CK cards directly from the Chamber office in

order to share with their employees and clients. For more information on this unique offer, please visit <http://www.shoplocalck.com> and click on the **"Wallaceburg Chamber Offer"** button in the bottom right corner.

Shop Local CK is designed to help Chatham-Kent's local businesses grow, prosper, and expand. Reward your employees with a Shop Local CK Card and **you'll be directly contributing to the revitalization of our vibrant communities...** and lets not forget about the great savings **you'll be passing on!** To purchase your discounted Shop Local CK Cards, please contact the Chamber Office at (519) 627-1443.

Chamber business members are also encouraged to participate in the Shop Local

CK program as a member business. Business participation is FREE - the only requirement is that you must be located within Chatham-Kent, and you must agree to offer your discount for one full year from the date of enrollment. To enroll your business, please visit <http://www.shoplocalck.com/enroll-your-business/>.

The small businesses of Chatham-Kent are committed to making more than just money—they're committed to making a difference. Show your dedication to local growth—purchase your Shop Local CK Card today!

Please note: The Shop Local CK program has replaced the current Value Added Member to Member Program. As such, your current Member-to-Member Program card will no longer be honoured.

Call For Nominations !!!



The 16th Annual Business & Community Excellence Awards are fast approaching and the Chamber is now looking for nominations.

We have revised the old and added 5 new award categories. We would like to stress that you do NOT need to be a Chamber member to qualify for a nomination.

Nomination forms will be available very soon.

NEW VISION OPTICAL

Brad Eggett

455 James St.
Wallaceburg, ON N8A 2N8
phone/fax 519-627-9380
newvision@bell.net

Monday 9-6 Tuesday 9-6 Wednesday closed
Thursday 9-6 Friday 9-8 Saturday 9-1



**Canadian Belgian Dutch Club
CBD Club Inc.
Weddings, Banquets
and more
Small or Large Functions**

*Talk to us about your fundraiser
for more info call 519-627-2401*

1342 Dufferin Ave., Wallaceburg N8A 2W5
• email: cbdclub@kent.net

Get to know your Executive Committee (cont'd) . . .



Vice President, Mike Hatfield

Mike is a graduate of Lambton College from the 3 year Business Administration Program and a major in Marketing. He has worked in the Oil Industry and Pulp and Paper Mining across North America until 2002 as an Engineering Sales Manager. Mike met his wife Denise in 2004 and they both retired in the same year. In 2008 Mike & Denise decided to open their own Café & Bistro. The business has grown into catering as well as fine dining and shows no signs of slowing down. Mike and Denise have been active in the community with both the BIA and the Chamber. Mike and Denise were major sponsors of the Wallaceburg Relay For Life event during its first year and will continue again this year by donating all the food required for 300 to 400 participants at no cost. They feel this is a major event that has touched both of their families in many ways. Mike and Denise feel grateful to have been given this honour and opportunity to participate.

Mike feels the town of Wallaceburg has been incredible in the way they accepted them into the community with open arms and they will always be proud of their new home here and look forward to many years of supporting and serving their community in anyway they can. Mike would like to thank Wallaceburg for being the best place they have ever lived, and they have lived coast to coast.



Treasurer, Matt Montague

Matt Montague joined TurnerMoore LLP in Wallaceburg in 2007 as a staff accountant. His role within the company has grown to become a personal tax return final review, corporate tax return and financial statement preparer, farm and business advisor, and to offer tax planning.

Matt is currently an active enrolled student in the Certified General Accountants of Ontario (CGA) program working towards his CGA designation. He has earned diplomas from Fanshawe College in Business Administration, Business Accounting, and Financial Services. These designations provide Matt with knowledge and expertise to handle various accounting and tax issues and to provide the appropriate advice to their clients.

Matt is a director and also the Treasurer for Selkirk History Faire Board. Matt was born and raised in Wallaceburg, Ontario. He and his wife Ashley, also from Wallaceburg, lived in London for five years until relocating back to Wallaceburg in 2007.



Secretary, Karen Debergh

Karen Debergh after a one year hiatus from the Board of Directors, has returned in the position of Secretary. She is currently a founding member of the Sydenham Toastmasters and the chair of the Sydenham Cultural Action Team. Karen has been a Financial Security Advisor with Freedom 55 Financial for 25 years. She is married to Philip Moses and has two children; Emily Branton an account executive with Innivity Marketing in Sarnia, and Haven Moses a second year engineering student at Queen's University.

**HYDE, HYDE &
McGREGOR**
barristers and solicitors

Tom McGregor LL.B.
233 Creek Street, Wallaceburg, ON N8A 4L3
Phone: 519.627.2081 Fax: 519.627.1615
Email: tommcgregor@bellnet.ca
Web: www.hhmlaw.ca

Seasons Greetings

“NEW” 2013 TIERED MEMBERSHIP ENROLMENT AND RENEWAL PACKAGE

The Wallaceburg Chamber's Membership and Finance committees have completed the final phase of the “NEW” Membership Enrolment and Renewal Package which is a Tiered Membership Package. “You” as a member have three options to choose from (Bronze, Silver or Gold) for the type of membership that best suits your needs. Each membership package includes the standard membership benefits as before with a few new added benefits per level. The membership packages are shown below. For more information, please contact Tina at the Chamber office 519.627.1443 or by email at info@wallaceburgchamber.com.

BRONZE PACKAGE

# of Employees	Annual Fees	HST	Total
1	\$94.00	\$12.22	\$106.22
2 - 4	\$135.00	\$17.55	\$152.55
5 - 10	\$178.00	\$23.14	\$201.14
11 - 30	\$290.00	\$37.70	\$327.70
31 - 100	\$380.00	\$49.40	\$429.40
101 +	\$470.00	\$61.10	\$531.10
Association	\$120.00	\$15.60	\$135.60

Bronze (Standard) Membership Package

- *includes membership to the Ontario Chamber of Commerce
- *Group Insurance
- *Merchant Card Discounts
- *ESSO Business Fleet Card Program
- *Website - complete listing with contact info (over 500 hits monthly)
- *Advertising - Newsletter (flyer insertion with newsletter; reaching over 300 decision makers in the business community)
- *Advertising - Bridging Opportunity Signs (discounted rate)
- *Representation at Municipal, Provincial, and Federal Levels

SILVER PACKAGE

# of Employees	Annual Fees	HST	Total
1	\$154.00	\$20.02	\$174.02
2 - 4	\$195.00	\$25.35	\$220.35
5 - 10	\$238.00	\$30.94	\$268.94
11 - 30	\$350.00	\$45.50	\$395.50
31 - 100	\$440.00	\$57.20	\$497.20
101 +	\$530.00	\$68.90	\$598.90
Association	\$180.00	\$23.40	\$203.40

Silver Membership Package

(savings of \$125.00)

- *Bronze Level Membership **PLUS**
- *one free Shop Local CK Card
- *one ticket for every monthly Community After 5 event for the current membership year
- *one ticket to the Annual Business & Community Excellence Awards Gala OR Christmas Gala
- *one business card size ad space in our quarterly newsletter (4 issues)

GOLD PACKAGE

# of Employees	Annual Fees	HST	Total
1	\$274.00	\$35.62	\$309.62
2 - 4	\$315.00	\$40.95	\$355.95
5 - 10	\$358.00	\$46.54	\$404.54
11 - 30	\$470.00	\$61.10	\$531.10
31 - 100	\$560.00	\$72.80	\$632.80
101 +	\$650.00	\$84.50	\$734.50
Association	\$300.00	\$39.00	\$339.00

Gold Membership Package

(savings of \$195.00)

- *Bronze Level Membership **PLUS**
- *one free Shop Local CK Card
- *two tickets for every monthly Community After 5 event for the current membership year
- *two tickets to the Annual Business & Community Excellence Awards Gala OR Christmas Gala
- *one business card size ad space in our quarterly newsletter (4 issues) as well as one flyer insert in an issue of your choosing

“CHOOSING THE MEMBERSHIP PACKAGE THAT BEST SUITS YOUR BUSINESS NEEDS”

Welcome New Members



The Baker's Affair

342 James Street
Wallaceburg, ON N8A 2N5
Phone: 519.626.9691
Email: thebakersaffair@cogeco.net
Contact: Pierre Zell, Owner
Bakery specializing in breads and desserts.

Wesley Law

28750 Island View Road
Wallaceburg, ON N8A 4K9
Phone: 519.627.5331
Email: jeff@wesleylaw.ca
Web: www.wesleylaw.ca
Contact: Jeff Wesley, Owner
A creative and innovative lawyer in all areas of litigation, dispute resolution and assistance to those that need effective advocacy combined with creative problem solving.

Couture Flatland Farms

6824 Rivard Line
Grand Pointe, ON N0P 1S0
Phone: 519.351.8603
Fax: 519.351.3193
Email: cflatland@explornet.com
Contact: Jennifer Couture, Owner

R Rental Inc.

750 Gillard Street
Wallaceburg, ON N8A 4Z5
Phone: 519.627.3025
Fax: 519.627.9746
Email: rrental@hotmail.com
Contact: Ruby Giethoorn, Owner
*R Rental Inc. rent tools, trailers, lifts and small machinery for all your needs at home or at work. If they **don't carry a certain item, they will do their best to get it for you.***

Bartech Rigging & Machinery Movers Inc.

920 Old Glass Road
Wallaceburg, ON N8A 3S8
Phone: 519.627.7500
Fax: 519.627.7501
Email: leevan@bartechrigging.com
Contact: Lee VanLandeghem, Vice President
*Bartech Rigging & Machinery Movers Inc. do rigging, machinery moving, fabrication, plant maintenance, **transportation, warehousing, over sea's packaging, CWB welding.***

